

34.92 Acres Perfect Hunting Tract Jefferson County, GA

- * Food Plots
- * Some Wetlands
- * Upland Hardwoods
- * Deer stands included
- * Owner Financing!
- * White's Creek
- * Great Price at \$64,602.00



Owner financing is available with \$6,461.00 down and the balance of \$58,1451.00 payable over a period of 15 years at 9% interest and even monthly payments of \$589.70 per year. No qualifying necessary.



4 or 5 acres of Cypress Swamp



Brashear Realty Corp.
513 Broad Street
Augusta, Georgia 30901

Tel: (706)-722-4308
Fax: (706)-722-4374

<http://www.GeorgiaLandSales.com>
e-mail: tice@brashearrealty.com

Information contained herein has been collected from reliable resources however it is not guaranteed. Information should be verified from independent resources.

©Copyright Brashear Realty Corporation 2013



Open Areas
with
Deer Feeders

Deer Stands
throughout the
property are included



Small open areas
for
Hunting



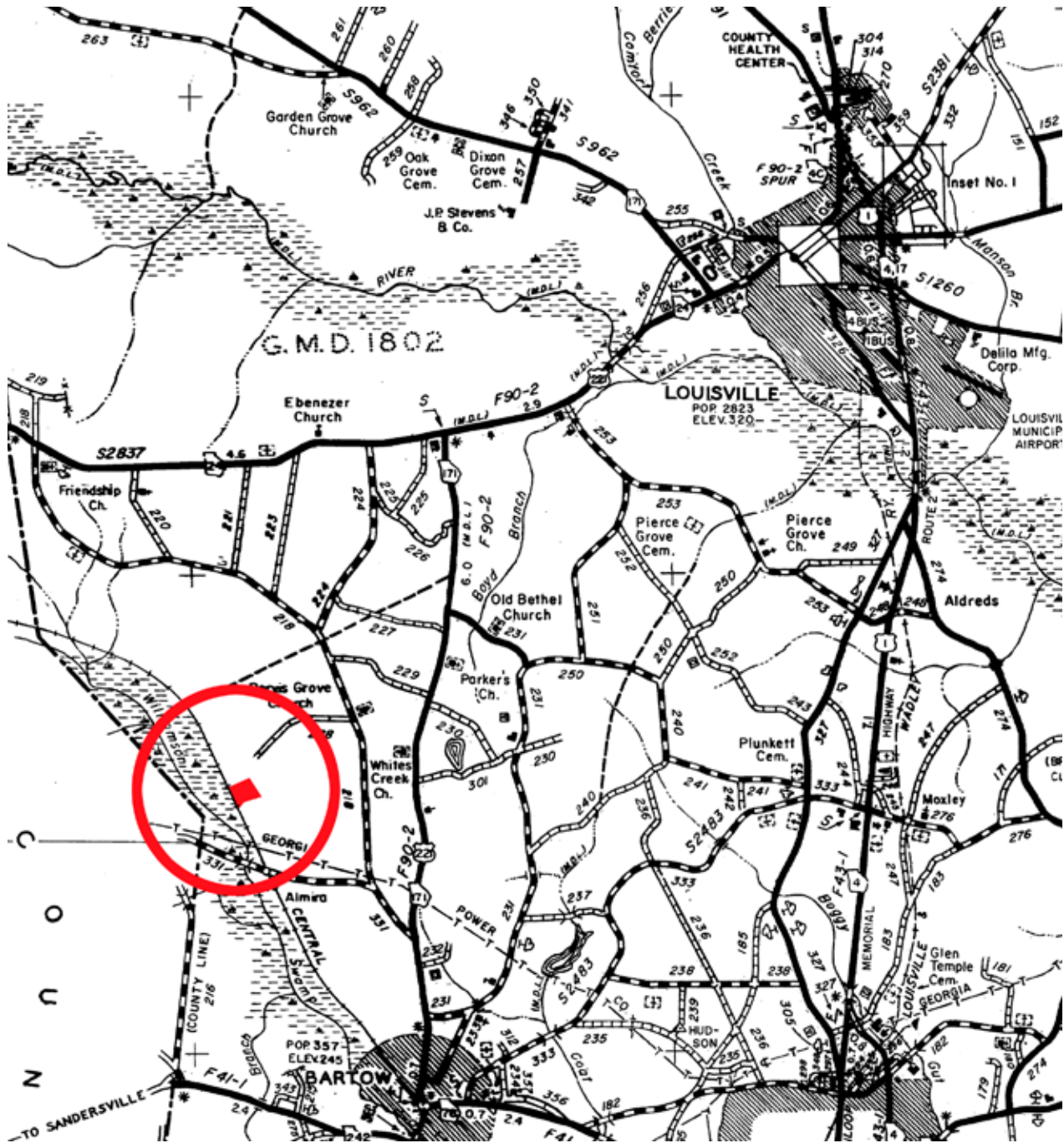
4 to 5 acres of
Cypress Swamp

Deer stands Included



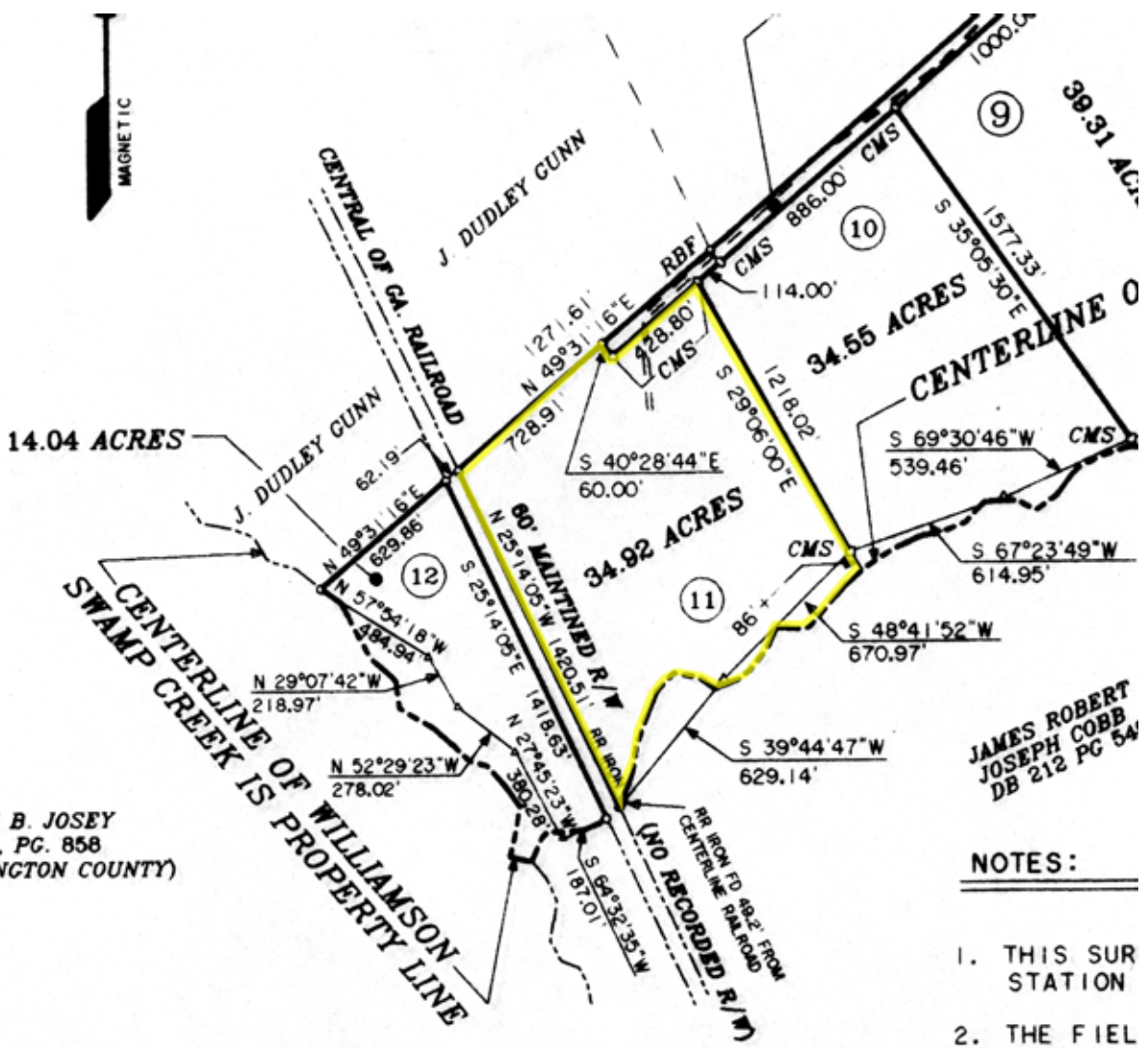
Creek flows year round

Directions: From Augusta take Highway 1 South into Jefferson County. Follow Highway 1 through Wrens and into downtown Louisville (Do Not take the Bypass). Continue straight as highway 1 turns into Highway 24. Follow Highway 24 for 5.7 miles. Turn left onto Donald Cobb Road. Follow Donald Cobb Road for 2.3 miles until it Deadends into Friendship Church Road. Turn left onto Friendship Church Road for 0.9 miles. Turn right onto Purvis Grove Church Road. Follow Purvis Grove Church Road until it dead ends at the property.



Aerial Photograph





HARRIS B. JOSEY
 D.B. 6E, PG. 858
 (WASHINGTON COUNTY)

JAMES ROBERT
 JOSEPH COBB
 DB 212 PG 54

NOTES:

1. THIS SUR STATION
2. THE FIELD CLOSURE ANGULAR BY THE C
3. THIS DIA