

# 146.1 Acres Live, Hunt, and Enjoy Glascocock County, GA

- \* Long Double Paved Road
- \* Marketable Timber
- \* Upland Hardwoods
- \* Longleaf Pine
- \* Beautiful Hilltop Views
- \* Will Consider Division
- \* Great Price at \$349,900.00



Frontage on Hadden Ranch Road



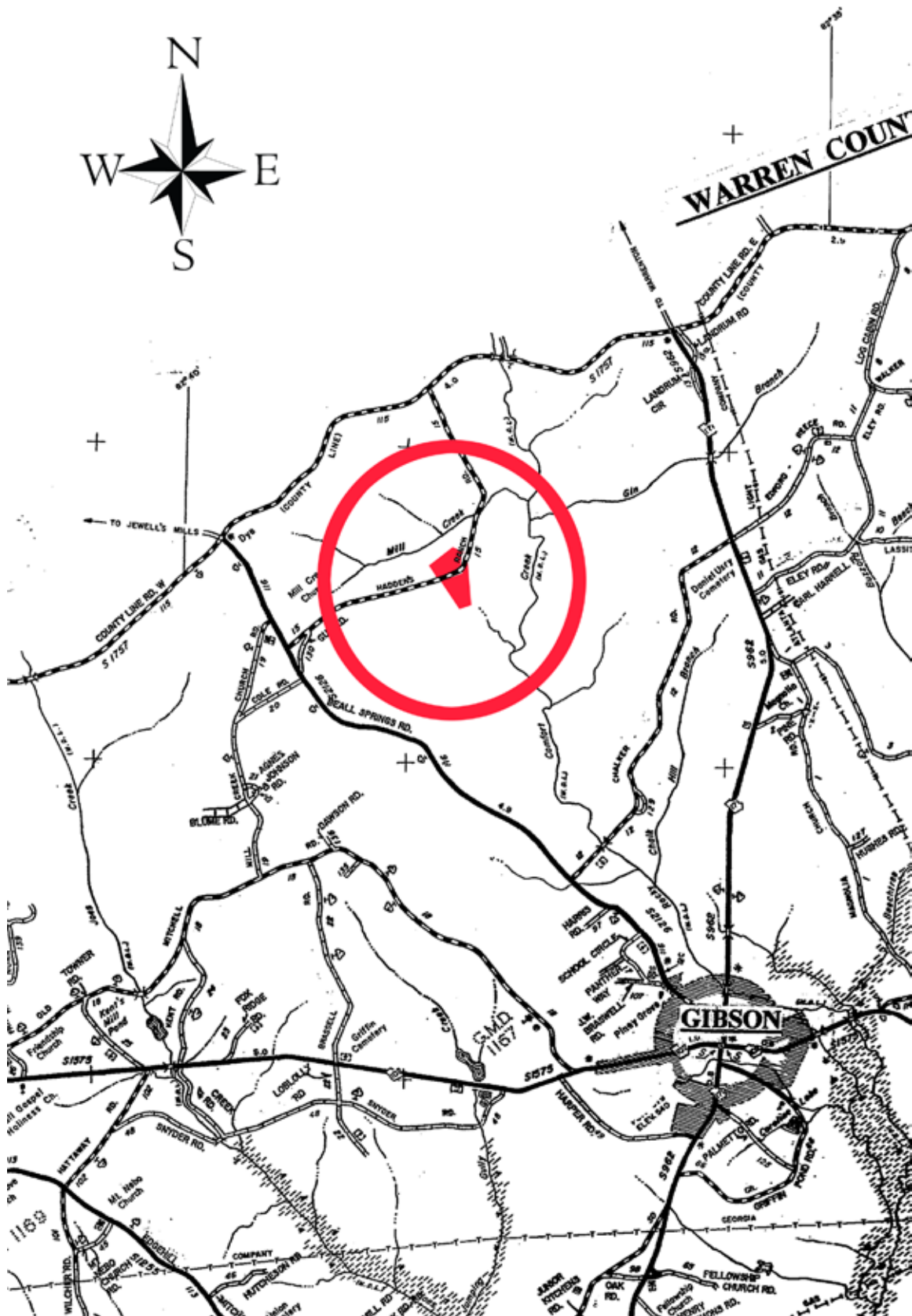
Brashear Realty Corp.  
513 Broad Street  
Augusta, Georgia 30901

**Tel: (706)-722-4308**  
**Fax: (706)-722-4374**

<http://www.GeorgiaLandSales.com>  
e-mail: [tice@brashearrealty.com](mailto:tice@brashearrealty.com)

Information contained herein has been collected from reliable resources however it is not guaranteed. Information should be verified from independent resources.

©Copyright Brashear Realty Corporation 2013



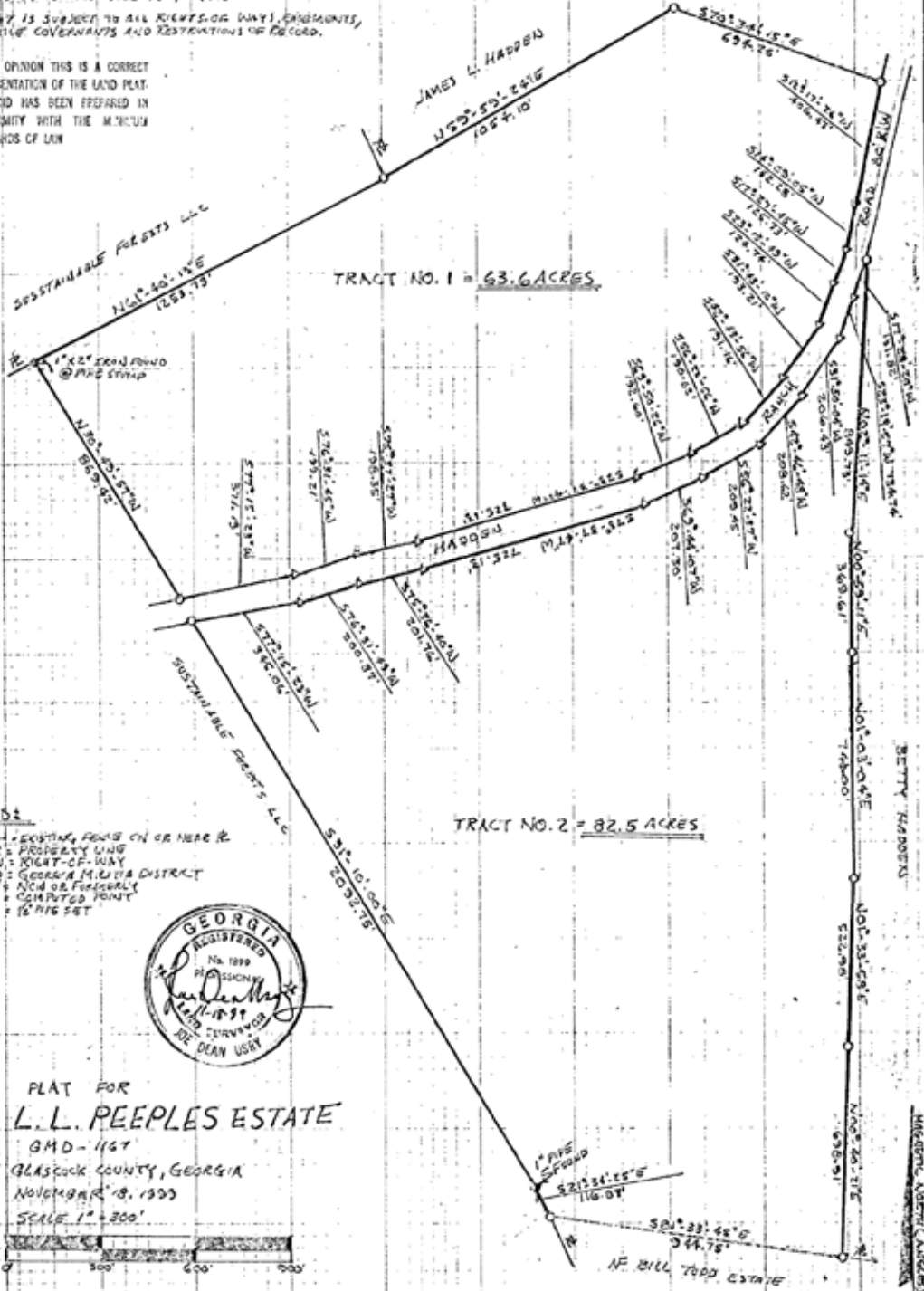


Aerial Photograph



NOTES:  
 (1) EQUIPMENT USED INCLUDES A TOPCON GTS AND TOTAL STATION INSTRUMENT  
 (2) CURVE DEFINITION: 1/10,000", ANGULAR 05"/POINT ADJUSTED BY CHORDS, RULE TO 1/10,000"  
 (3) THIS PLAT IS SUBJECT TO ALL RIGHTS OF WAY, EASEMENTS, EJECTIVE COVENANTS AND RESTRICTIONS OF RECORD.

IN MY OPINION THIS IS A CORRECT REPRESENTATION OF THE LAND PLATED AND HAS BEEN PREPARED IN CONFORMITY WITH THE MINIMUM STANDARDS OF LAW



LEGEND:  
 X-A-A = EXISTING FOUND ON OR NEAR R.  
 P = PROPERTY LINE  
 R/W = RIGHT-OF-WAY  
 GMD = GEORGIA METRIC DISTRICT  
 M = METRIC POINT  
 Δ = COMPUTED POINT  
 O = 16" RIG SET



PLAT FOR  
**L. L. PEEPLES ESTATE**  
 GMD-1167  
 GLASCOCK COUNTY, GEORGIA  
 NOVEMBER 18, 1993  
 SCALE 1" = 300'

PLAT AND FIELD SURVEY BY JOE DEAN USRY, RLS #1899  
 2070 SHELBY CIRCLE - TRAIL BOX 111  
 CLIFTON, GEORGIA 30810  
 TEL-558-3614

TRACT NO. 1 = 63.6 ACRES  
 TRACT NO. 2 = 82.5 ACRES  
 TOTAL = 146.1 ACRES

Georgia, Glascock County  
 Office of Clerk of Superior Court  
 The within page was filed for record at  
 8:30 o'clock A. M. of July, 2005 and  
 recorded 10<sup>th</sup> day of July, 2005  
 B Plat Book Page 7  
 Carla P. Stevens, Clerk